



# Chameleon CoaXPress Camera Simulator Application Installation Guide

(Part-No. KY-ChameleonApp)

## Installation Guide 2014

International Distributors

**sky blue**  
microsystems

Sky Blue Microsystems GmbH  
Geisenhausenerstr. 18  
81379 Munich, Germany  
+49 89 780 2970, info@skyblue.de  
www.skyblue.de

**ZERIF**  
TECHNOLOGIES LTD.  
A SKY BLUE COMPANY, FOUNDED 1999

In Great Britain:  
Zerif Technologies Ltd.  
Winnington House, 2 Woodberry Grove  
Finchley, London N12 0DR  
+44 115 855 7883, info@zerif.co.uk  
www.zerif.co.uk

## 1.1 Safety Precautions

With your *Chameleon CoaXPress Camera Simulator board* in hand, please take a minute to read carefully the precautions listed below in order to prevent unnecessary injuries to you or other personnel or cause damage to property.

- **Before using the product, read these safety precautions carefully to assure correct use.**
- **These precautions contain serious safety instructions that must be observed.**
- **After reading through this manual, be sure to act upon it to prevent misuse of product.**



Caution

<p><b>In the event of a failure, disconnect the power supply.</b> If the product is used as is, a fire or electric shock may occur. Disconnect the power supply immediately and contact our sales personnel for repair.</p>
<p><b>If an unpleasant smell or smoking occurs, disconnect the power supply.</b> If the product is used as is, a fire or electric shock may occur. Disconnect the power supply immediately. After verifying that no smoking is observed, contact our sales personnel for repair.</p>
<p><b>Do not disassemble, repair or modify the product.</b> Otherwise, a fire or electric shock may occur due to a short circuit or heat generation. For inspection, modification or repair, contact our sales personnel.</p>
<p><b>Do not touch a cooling fan.</b> As a cooling fan rotates in high speed, do not put your hand close to it. Otherwise, it may cause injury to persons. Never touch a rotating cooling fan.</p>
<p><b>Do not place the product on unstable locations.</b> Otherwise, it may drop or fall, resulting in injury to persons or failure.</p>
<p><b>If the product is dropped or damaged, do not use it as is.</b> Otherwise, a fire or electric shock may occur.</p>
<p><b>Do not touch the product with a metallic object.</b> Otherwise, a fire or electric shock may occur.</p>
<p><b>Do not place the product in dusty or humid locations or where water may splash.</b> Otherwise, a fire or electric shock may occur.</p>
<p><b>Do not get the product wet or touch it with a wet hand.</b> Otherwise, the product may break down or it may cause a fire, smoking or electric shock.</p>
<p><b>Do not touch a connector on the product (gold-plated portion).</b> Otherwise, the surface of a connector may be contaminated with sweat or skin oil, resulting in contact failure of a connector or it may cause a malfunction, fire or electric shock due to static electricity.</p>

**Do not use or place the product in the following locations.**

- Humid and dusty locations
- Airless locations such as closet or bookshelf
- Locations which receive oily smoke or steam
- Locations close to heating equipment
- Closed inside of a car where the temperature becomes high
- Static electricity replete locations
- Locations close to water or chemicals

Otherwise, a fire, electric shock, accident or deformation may occur due to a short circuit or heat generation.

**Do not place heavy things on the product.**

Otherwise, the product may be damaged.

**Be sure to drain static electricity from body before you touch any electronics component**

The electronic circuits in your computer and the circuits on Chameleon board are sensitive to static electricity and surges. Improper handling can seriously damage the circuits. In addition, do not let your clothing come in contact with the circuit boards or components.

Otherwise, the product may be damaged.

## 1.2 Disclaimer

This product should be used for simulation of CoaXPress video streams. KAYA Instruments assumes no responsibility for any damages resulting from the use of this product for purposes other than those stated.

Even if the product is used properly, KAYA Instruments assumes no responsibility for any damages caused by the following:

- Earthquake, thunder, natural disaster or fire resulting from the use beyond our responsibility, acts caused by a third party or other accidents, the customer's willful or accidental misuse or use under other abnormal conditions.
- Secondary impact arising from use of this product or its unusable state (business interruption or others).
- Use of this product against the instructions given in this manual or malfunctions due to connection to other devices.

KAYA Instruments assumes no responsibility or liability for:

- Erasure or corruption of data arising from use of this product.
- Any consequences or other abnormalities arising from use of this product, or damage of this product not due to our responsibility or failure due to modification.

Repair of this product is carried out by replacing it on a chargeable basis, not repairing the faulty devices. However, non-chargeable replacement is offered for initial failure if such notification is received within two weeks after delivery of the product.

### 2.1 Overview

The *Chameleon* is the industry's first *Camera Simulator* supporting CoaXPress standard. This simulator is capable of generating video streams and test patterns of up to 4 CoaXPress links in single, dual and quad modes. Each link supports standard CoaXPress bitrates up to 6.25 Gbps. This product is ideally suited for development of industrial, defense and aerospace Machine Vision Systems and applications. The Chameleon can easily transmit generic test patterns, customer's specific pre-processed data or custom video streams on the CoaXPress links. It also provides GPIO for machine control signals, such as triggers, shaft encoders, exposure control and general I/O, which can be simulated together with the video streams. The simulator enables transmitting the video streams from onboard memory as well as run time uploading the streams from computer memory.

### 2.2 Purpose

The purpose of this document is to describe software application installation procedure required for proper functionality of the product.

In any case of malfunction or unexpected results during installation, please, contact KAYA Instruments' representative.

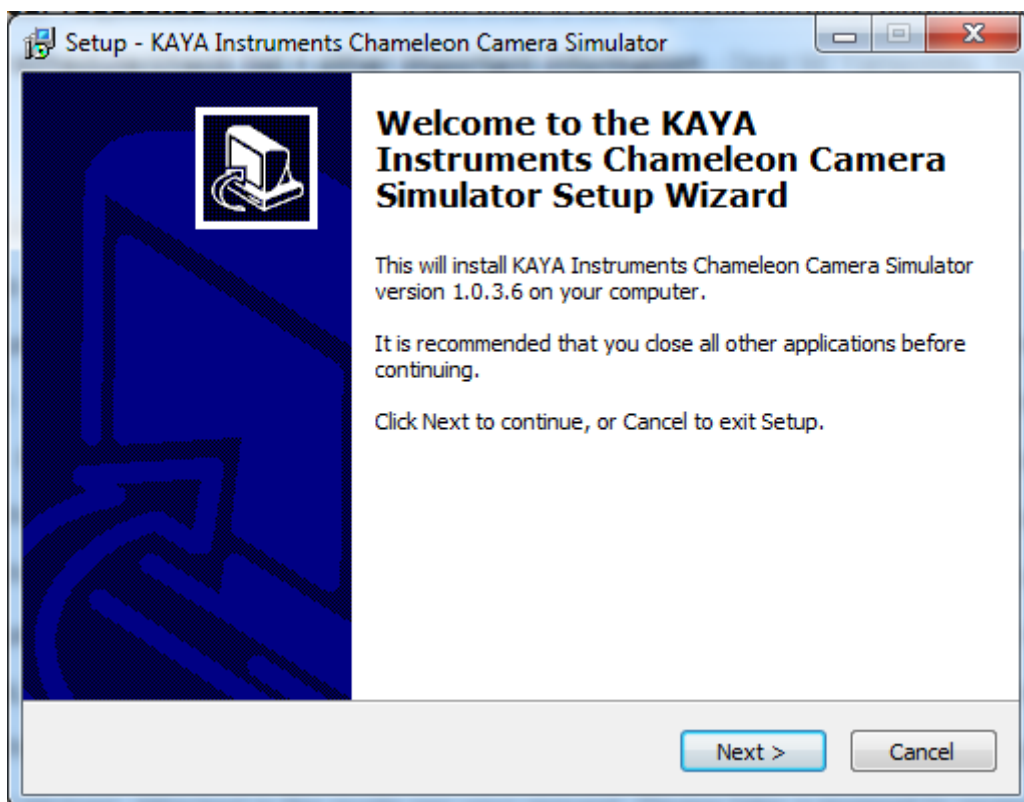
### 3.1 System Requirements

Prior to start of installation process, please, make sure your system meets the following requirements:

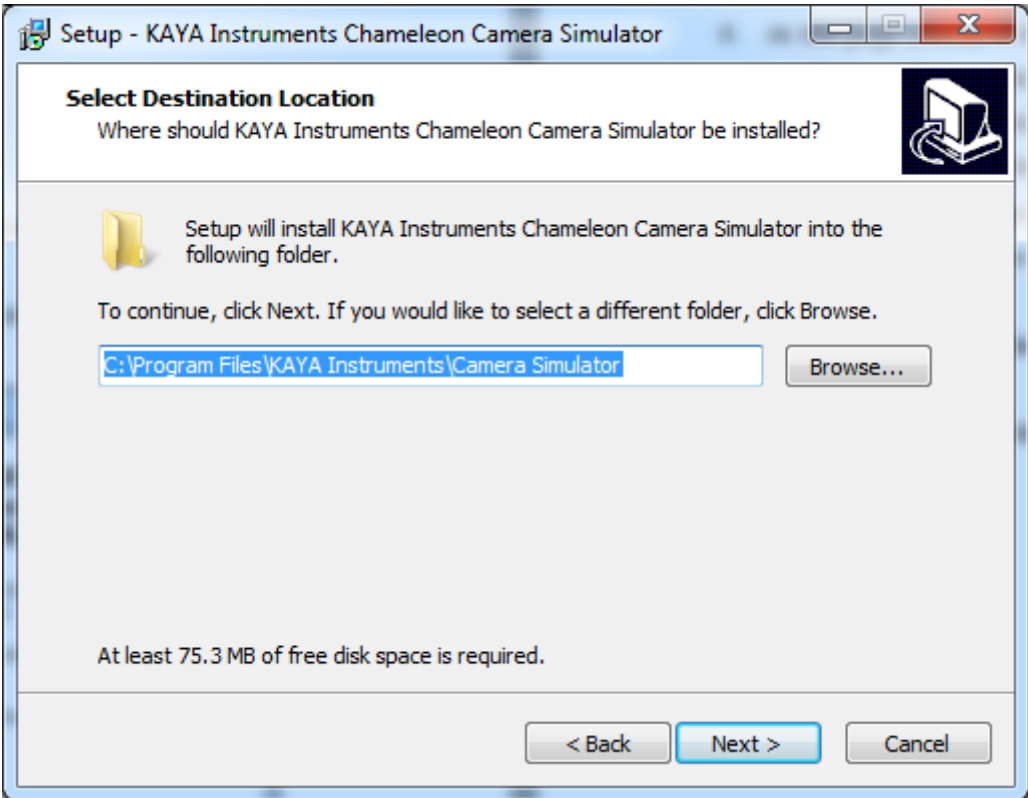
1. Microsoft Windows 7, 64-bit Operating System installed
2. 4 GB of RAM or more
3. 100 MB available disk space for default install

### 3.2 Installation Procedure

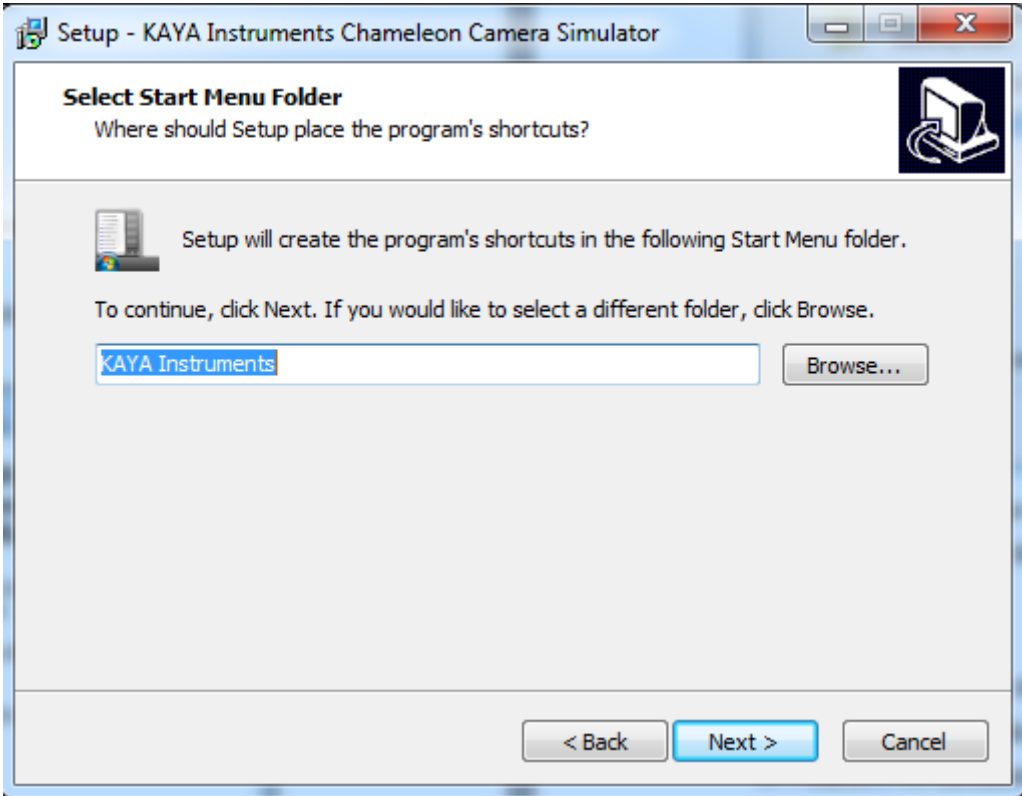
1. Within the Explorer window, open the folder that contains the installation file: ChameleonApp\_setup.exe and double-click it.
2. After the Installation Utility starts follow the instructions as described below.
3. At Welcome screen click on “Next”.



- 4. At this stage you will have to define target folder for the application. It is recommended to keep the default folder. After you select the installation folder, click the “Next” button.

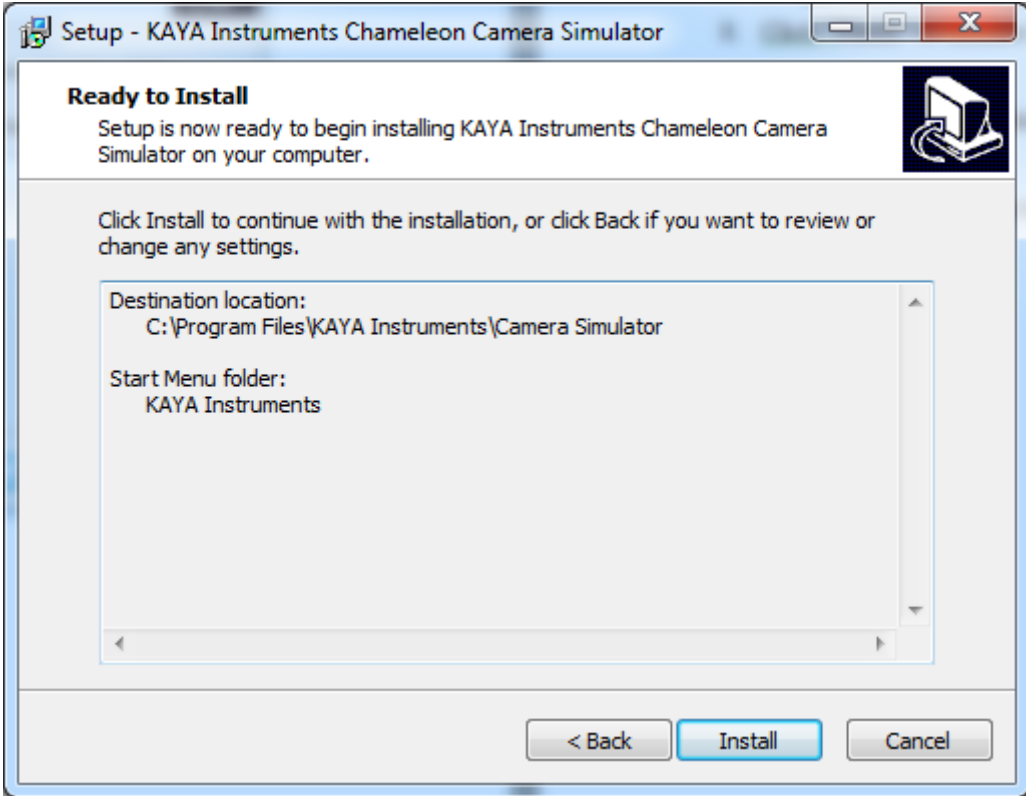


- 5. Now you will have to select the Start Menu folder for the application. It is recommended to keep the default location. Click the “Next” button to proceed.

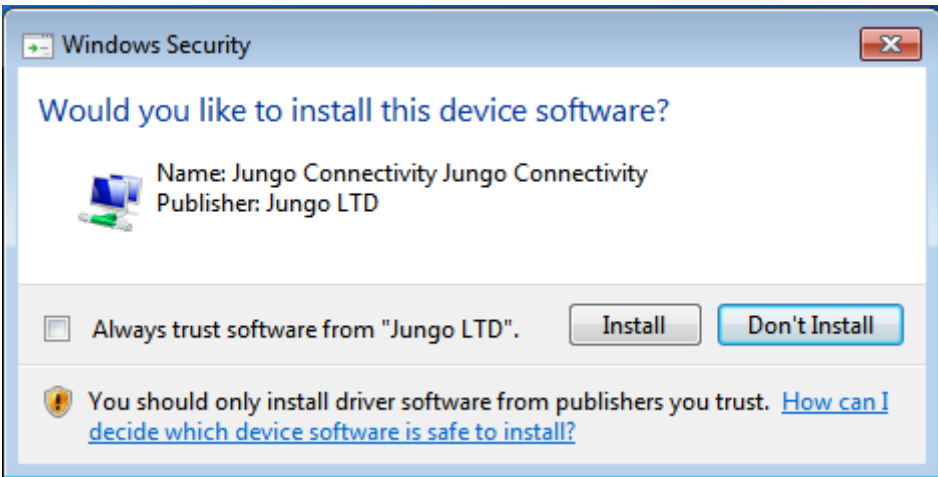




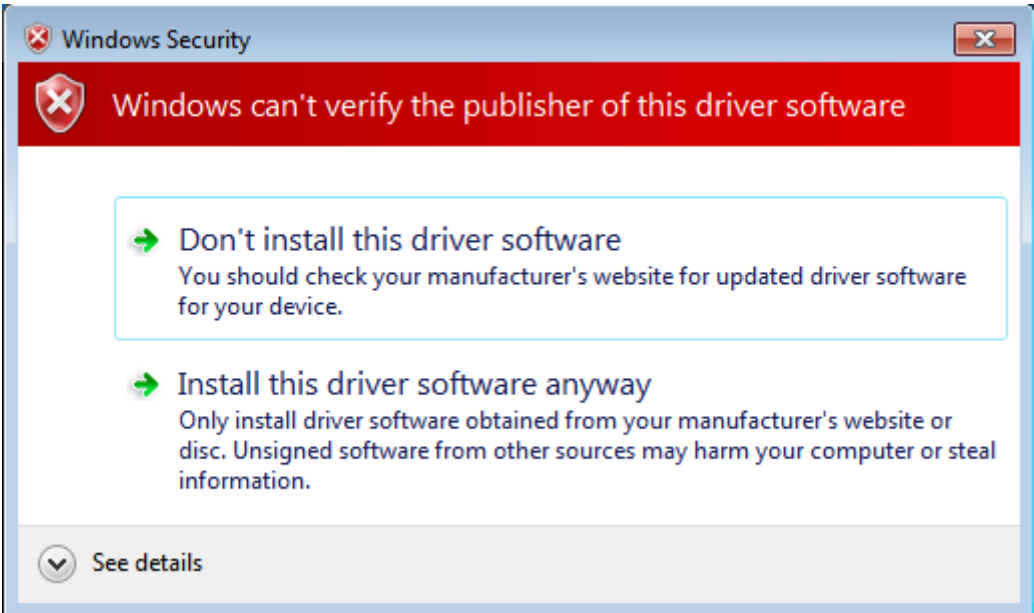
- 6. At this stage you will have the chance to review the settings prior to actual application installation. After you click “Next”, the installation procedure will start. It will take a few minutes for installation to complete.



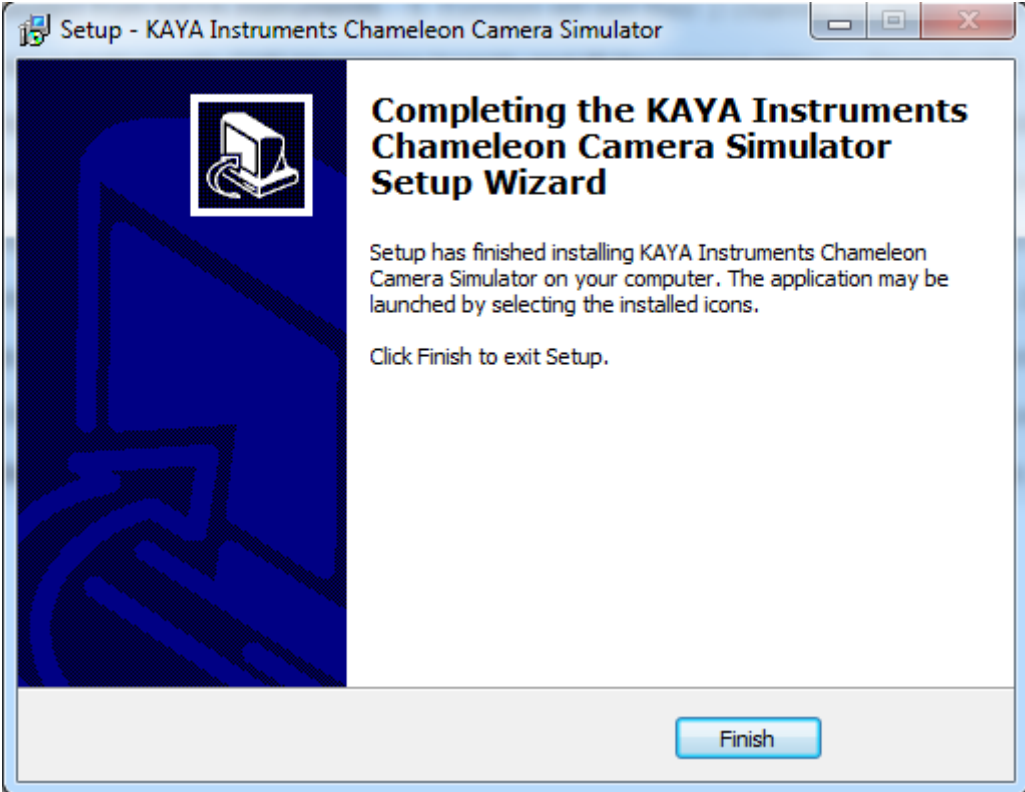
- 7. If the installation procedure notify you about Jungo driver installation, as appears in the next screenshots, press “Install” to proceed.



- 8. When the Windows Security alert window appears please press “Install this driver software anyway”.



- 9. Click “Finish” to finalize the installation.



Now, after the installation has finished, you are welcome to start Chameleon Camera Simulator Application.

For further information on this application, please refer to Chameleon Application User Guide.

---

### International Distributors



Sky Blue Microsystems GmbH  
Geisenhausenerstr. 18  
81379 Munich, Germany  
+49 89 780 2970, [info@skyblue.de](mailto:info@skyblue.de)  
[www.skyblue.de](http://www.skyblue.de)



In Great Britain:  
[Zerif Technologies Ltd.](http://ZerifTechnologiesLtd.com)  
Winnington House, 2 Woodberry Grove  
Finchley, London N12 0DR  
+44 115 855 7883, [info@zerif.co.uk](mailto:info@zerif.co.uk)  
[www.zerif.co.uk](http://www.zerif.co.uk)