



JetCam19

JetCam19

Super Speed, POV Camera

Innovative Approach

JetCam19 is a high speed, low-cost, global shutter CMOS camera with a Fiber interface which supports full HD (1920×1080) high quality video at rates up to 2360fps.

Intelligent Design

The camera incorporates a 10 µm global shutter sensor and a direct lens control (optional) without need of external devices. With compact outline and low power design this camera can be fitted into tight spaces. The 3G SDI output enables connection of local monitor as viewfinder or an installation aid.

Applications:

- Slow Motion
- 3D Applications
- Sports judgement
- Broadcasting
- Sport analytics
- Special effects

Key Features:

- 2.1 Megapixel up to 2360 fps
 - 40 Gbps fiber optic interface
 - Up to 10 km cable length
 - 3G SDI output for local monitoring
 - Wide variety of supported lens mounts
 - B4 2/3" mount with integrated lens control*
 - Compatible with KAYA Vision Point™ SDK
 - Compatible with KAYA Komodo™ Frame Grabbers
 - Customization as per user requirements
- * Lens control is optional



Technical Data

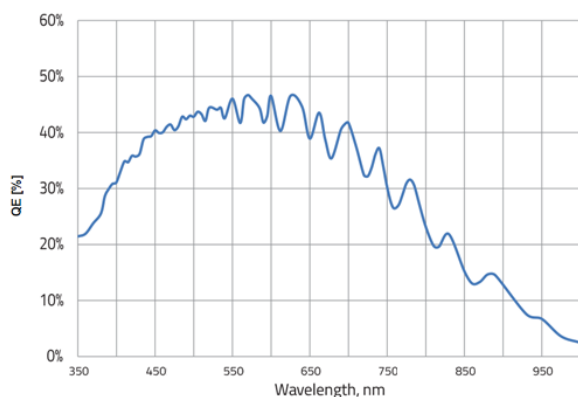
Feature	Description
Pixel Size	10 μm x 10 μm
Resolution	1920 (H) x 1080 (V)
Optical Format	4/3"
Sensor	LUX19HS
Video Output	CLHS up to 40 Gbps for QSFP+ CLHS up to 20 Gbps for Dual SFP+ 10GiGE up to 10Gbps (optional)
Complimentary Video Output	3G SDI
Output Resolution	8 or 10 bit
Max Frame Rate	2360 fps @8 bit resolution 1890 fps @10 bit resolution
Image Acquisition	Continuous / Triggered
Electronic Shutter	Global shutter
Monochrome/ Color	Monochrome / Color
Responsivity	20V/Lux's @ 550nm
Temporal Noise	< 17.9 e ⁻
Full Well Charge	12000 e ⁻
Dynamic Range	> 56.1 dB @ 520 nm
Signal-to-Noise Ratio (SNR Max)	41 dB @ 520 nm
Quantum Efficiency (QE) X FF	54.275% @ 520 nm
DSNU	< 32.8 e ⁻ (2.26 LSB10)
PRNU	< 2.5% rms
Shortest Exposure	1.5 μs
Programmable I/O	2x RS232 (RS485 optional)
On Camera Processing	<ul style="list-style-type: none"> Defect pixel correction ROI Frame counter LUT Auto black level Auto/Manual White balance Image flip Flat field correction Gain (Analog/Digital) Nonvolatile storage
Lens Control (Optional)	<ul style="list-style-type: none"> Fujinon lens control Custom lens control through RS232/RS485 Birger lens control

Mechanical & Electrical

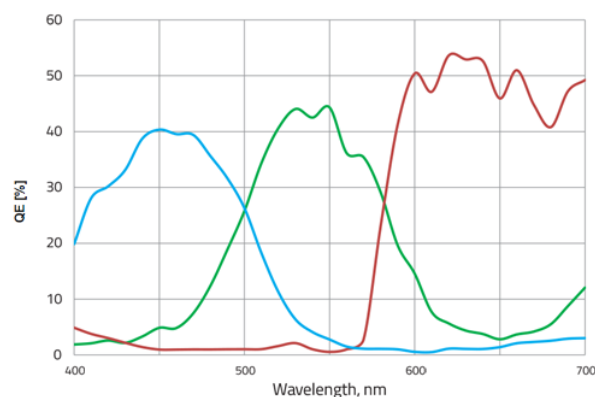
Feature	Description
Dimensions (including lens mount)	61.8 mm x 62.4 mm x 157 mm (Height x Width x Depth)
Lens Mount	F-Mount, B4-mount, C-mount, Canon EF-mount, Birger EF-mount, PL-mount or M42-mount
Weight (without Lens)	~1260g
Power Input	12 VDC (optional 24 VDC)
Power Consumption	< 16W
Operating Temperature	-10 °C to 50 °C, 10-90% humidity (non-condensing)
Storage Temperature	-10 °C to 55 °C, 10-90% humidity (non-condensing)

Quantum Efficiency

QE of LUX19HS – Monocolor

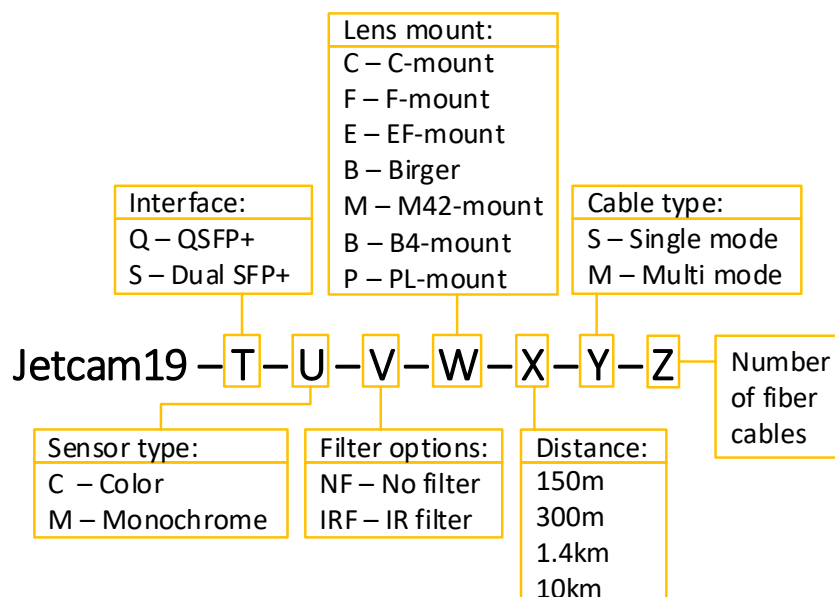


QE of LUX19HS – Color



Ordering Information

KAYA's Part Numbers are intuitive and derived directly from the product's properties. Each index represents a different property of the camera, according to the following diagram:

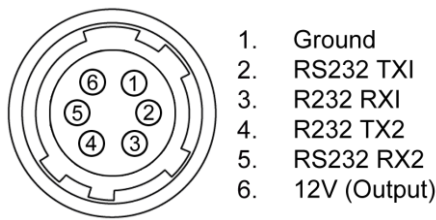


Product Name	Product Part Number
Power supply	KY-PWR12
2m SDI cable	KY-CCA-001-002.0
Switchcraft Inc PWR connector (M)	TB3M
Switchcraft Inc. Opposite PWR (F)	TA3FX
QSFP+ Multi Mode 150m	KY-QSFP-40G85-1M
QSFP+ Single mode 1.4km	KY-QSFP-40G31-1.4
SFP+ Single Mode 10km	KY-SFP-10GLR-31
SFP+ Multi mode 300m	KY-SFP-10G85-3M
Single Mode Patch cable Duplex with LC termination	KY-FCA-D-SM-LC-LC-2.0
Single Mode 8 cores cable with MTP/MPO termination	KY-FCA-Q-SM-5.0
Multi Mode Patch cable Duplex with LC termination	KY-FCA-D-MM-LC-LC-50.0
Multi Mode 8 cores cable with MTP/MPO termination	KY-FCA-Q-MM-4.0

Please contact a sales representative over at info@kayainstruments.com for a full list of peripherals including cables and frame grabbers.

General Purpose Input Output

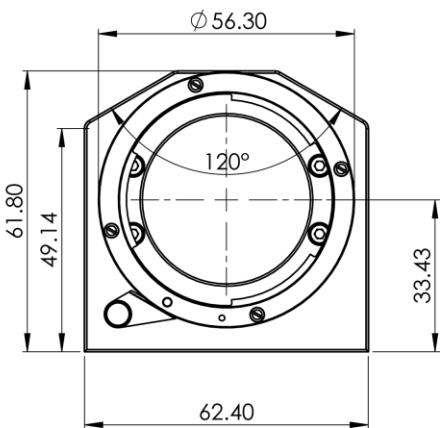
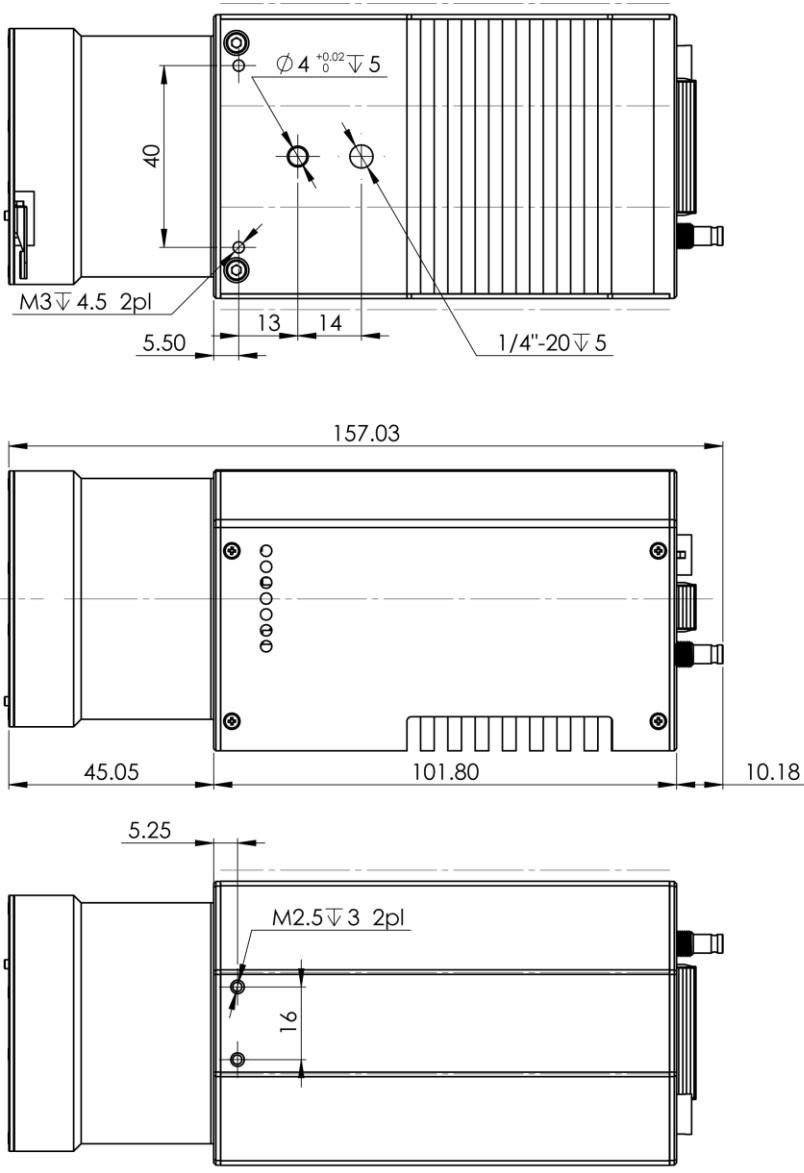
GPIO Pinout – 6 Pin Connector



The GPIO connector used on the camera is a 6 pin female Hirose connector. It is recommended to use a cable with a matching Hirose 6 pin male connector. Hirose’s manufacturer’s part number is listed below:

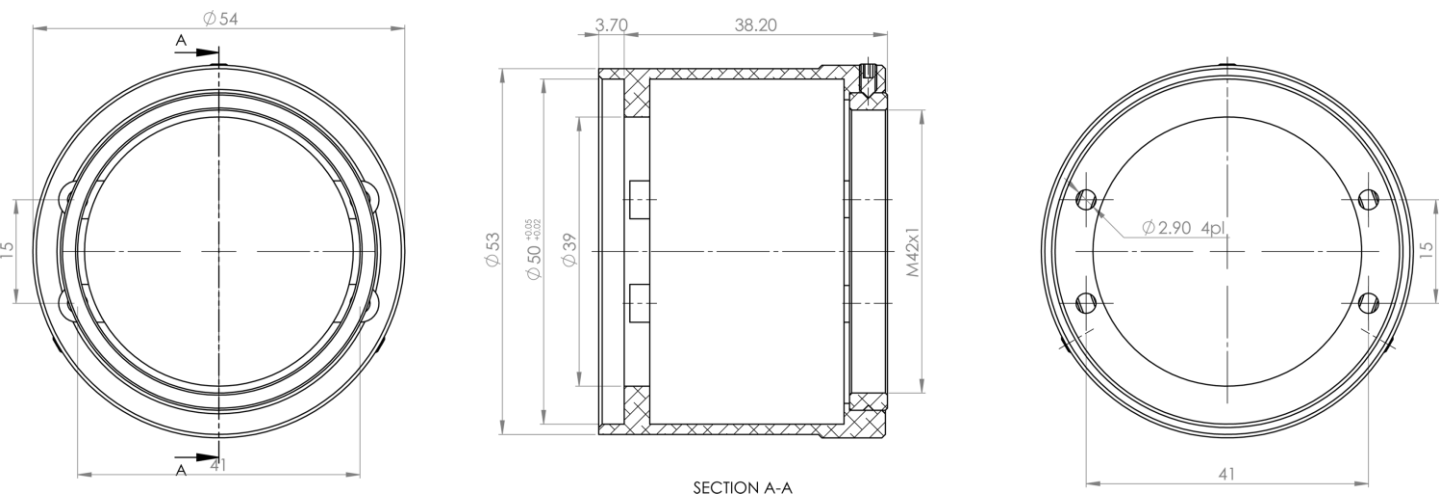
Product Name	Product Part Number
Hirose 6P connector, female	HR10-7R-6S(73)
Hirose 6P connector, male	HR10-7P-6P(73)

Mechanical Drawings

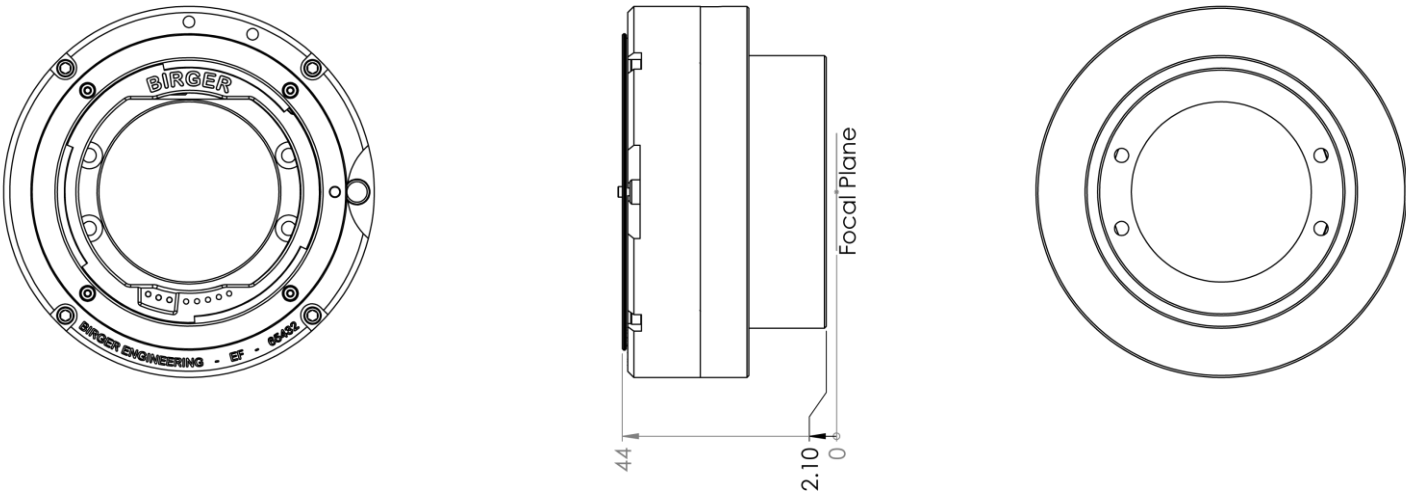


Lens Mounts Mechanical Drawings

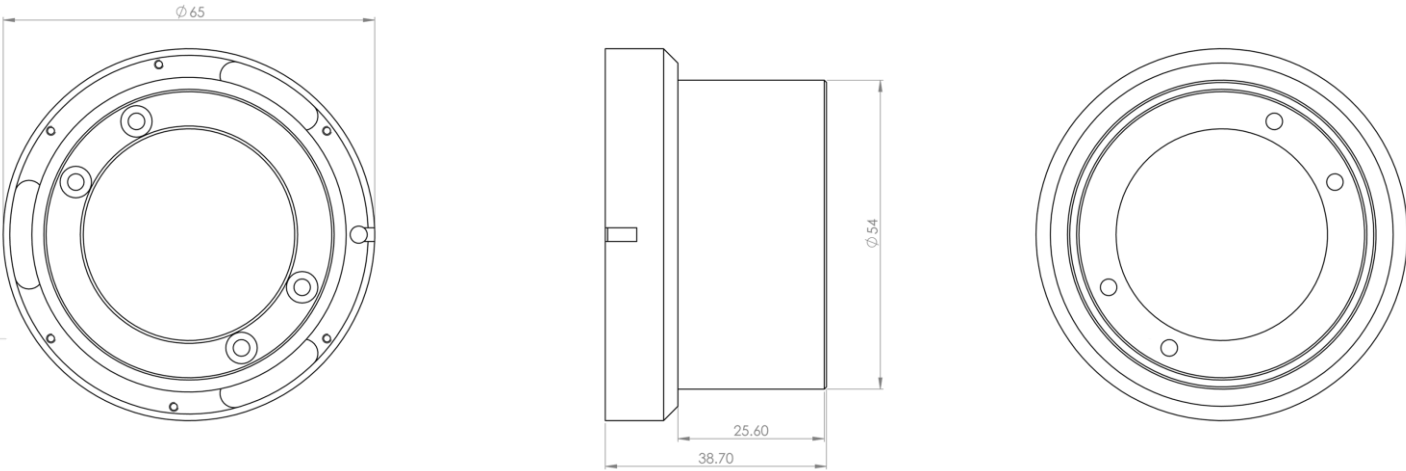
Nikon F mount:



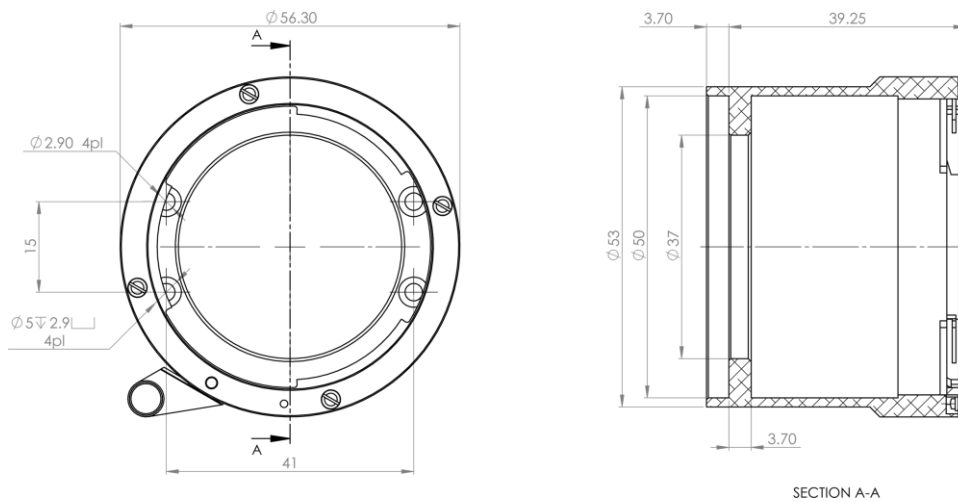
Birger EF mount:



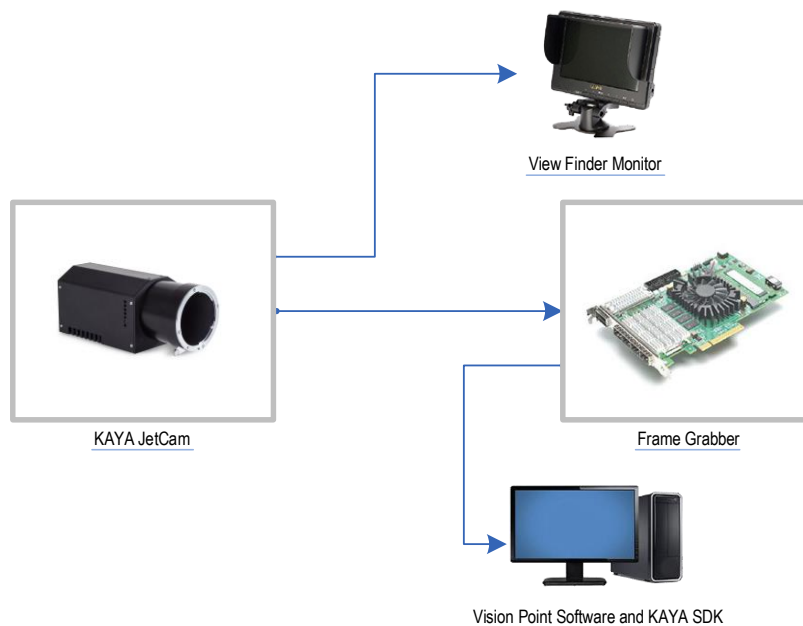
Canon EF mount:



M42 mount:



KAYA High Speed Camera Workflow



Compatibility

KAYA Instruments creates and maintains compatibility and interfaces for the most common and advanced vision image processing libraries and applications. Major support is available for **MVTec Halcon**, **National Instruments' LabVIEW** and **MathWorks' MATLAB**.

❖ Supported vision standards:



❖ Supported vision libraries:



❖ Supported operating systems:



Please check our website for an up-to-date list of other supported libraries and software package



Sky Blue Microsystems GmbH
Geisenhausenerstr. 18
81379 Munich, Germany
+49 89 780 2970, info@skyblue.de
www.skyblue.de

International Distributor

KAYA Instruments

Please feel free to contact our sales team for pricing, availability, documentation or customization at our e-mails – we will be happy to provide assistance and consultation.



© 2024 KAYA Instruments, Inc. All rights reserved. KAYA Instruments, the KAYA Instruments Komodo logo, JetCam logo, Predator, Iron and combinations thereof are trademarks of KAYA Instruments, Inc. in the United States and/or other jurisdictions. Microsoft Windows is a registered trademark of Microsoft Corporation. Other names are for informational purposes only and may be trademarks of their respective owners. KAYA Instruments is not liable for harm or damage incurred by information contained in this document.