



## Iron SDI 462

# Iron SDI Small Form Factor, Ruggedized Camera

### Innovative Approach

The **Iron SDI 462** is an ultra-thin, low-cost, low-power rolling shutter CMOS camera with an SDI interface which supports high quality video at rates up to 60 fps.

### Intelligent Design

Our camera incorporates high sensitivity Sony rolling shutter sensor with a 2.9 $\mu$ m pixel size. With an extremely compact outline the **Iron** can be fitted into tight spaces. Superior sensor performance allows very low light vision capabilities.

### Applications:

- Perimeter vision
- Low light surveillance
- Special Effects
- Virtual Reality
- 3D

### Key Features:

- Maximal frame rate of up to 60 fps
- Up to 2.2W power at full rate
- Full image processing feature set
- Up to HD-SDI interface
- PAL/NTSC output
- M12 lens mount
- Rugged industrial grade
- Full built-in self-test (BIT)
- Full built-in voltage testing
- Customization as per user requirements
- Board level and packaged camera options
- Miniature MCX connector for SDI output

## Specifications

Feature	Description
Pixel Size	2.9 µm x 2.9 µm
Optical format	1/2.8
Sensor	Sony IMX 462 Rolling shutter sensor
Video Output	1080/30p, 1080/25p, 720/50p , 720/60p, NTSC, PAL over MCX connector
Output Interface	Single-Link HD-SDI
Output Format	10-bit 4:2:2(Y'Cb'Cr')
Electronic Shutter	Rolling shutter
Monochrome / Color	Color
Dynamic Range	> 72dB
Signal-to-Noise Ratio (SNR max)	> 42 dB
Shortest Exposure	10 µs
Exposure Control	Automatic Exposure/Gain, manual Exposure/Gain
Image Enhancement	<ul style="list-style-type: none"> <li>▪ Defect pixel correction</li> <li>▪ Auto/Manual black level</li> <li>▪ Image flip</li> <li>▪ Defog</li> <li>▪ Color correction matrix</li> <li>▪ Operational Time Counter</li> <li>▪ Auto/Manual White balance</li> <li>▪ LUT</li> <li>▪ RGB offsets, saturation control</li> </ul>
Camera Configuration	RS232 direct ASCII protocol
Synchronization	Optional Tri-level sync input

## Mechanical & Electrical

Feature	Description
Dimensions (including lens mount)	43.5 mm x 44 mm x 34.82 mm (Height x Width x Depth)
Lens Mount	M12
Weight (without lens)	~50g
Power Input	5-28V
Power Consumption	1.77W @ 12V DC, 60°C ambient temperature, SDI and Analog outputs are active 2.2W @ 24V DC, 80°C ambient temperature, SDI and Analog outputs are active
Operating Temperature	-40°C to 80°C, 20-85% humidity (non-condensing)
Storage Temperature	-40°C to 85°C, 20-85% humidity (non-condensing)

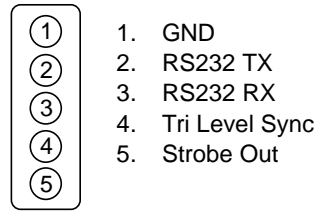
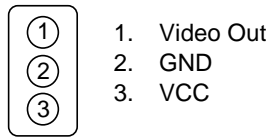
## Iron SDI Supported Video Modes

Mode	Video Standard	Supported Resolution	Supported FPS
HD-SDI	ST 292 (ST 274)	720p 10-bit 4:2:2/RAW	50,60
		1080p 10-bit 4:2:2/RAW	25, 30
CVBS video output	PAL		25
	NTSC		30

\* KAYA Instruments reserves the right to update the data sheet from time to time without prior notice.

# General Purpose Input Output

The Iron SDI 462 uses 2 GPIO connectors. Connector pin-outs and manufacture's PN are as listed:



Product Name	Product Part Number
Molex 3P PicoBlade PCB Header	0533980367
Molex 5P PicoBlade PCB Header	533980567

## Ordering Information

The Iron SDI 462 is available in two different configurations, with the PN listed under the following product number:

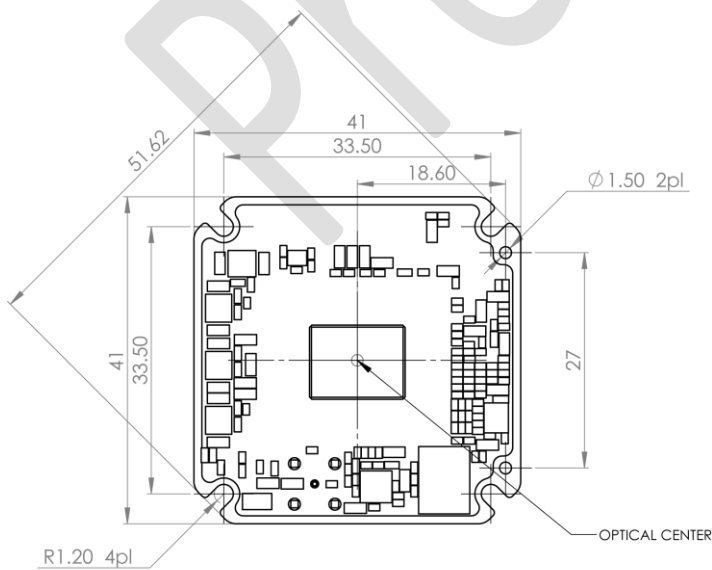
Enclosure  
OF – Open Frame  
CF – Closed Frame

Iron462 – HDSDI – C – NF – M – N – NPT – CG – **OF**

Please contact a sales representative over at [info@skyblue.de](mailto:info@skyblue.de) for a full list of peripherals including cables and frame grabbers.

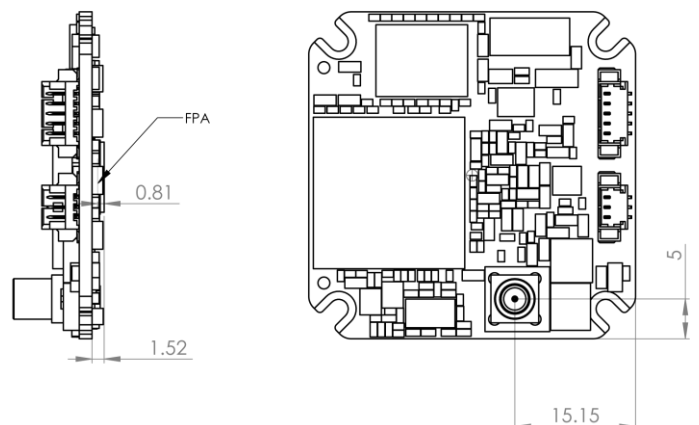
## Mechanical Drawings

Open frame Camera:

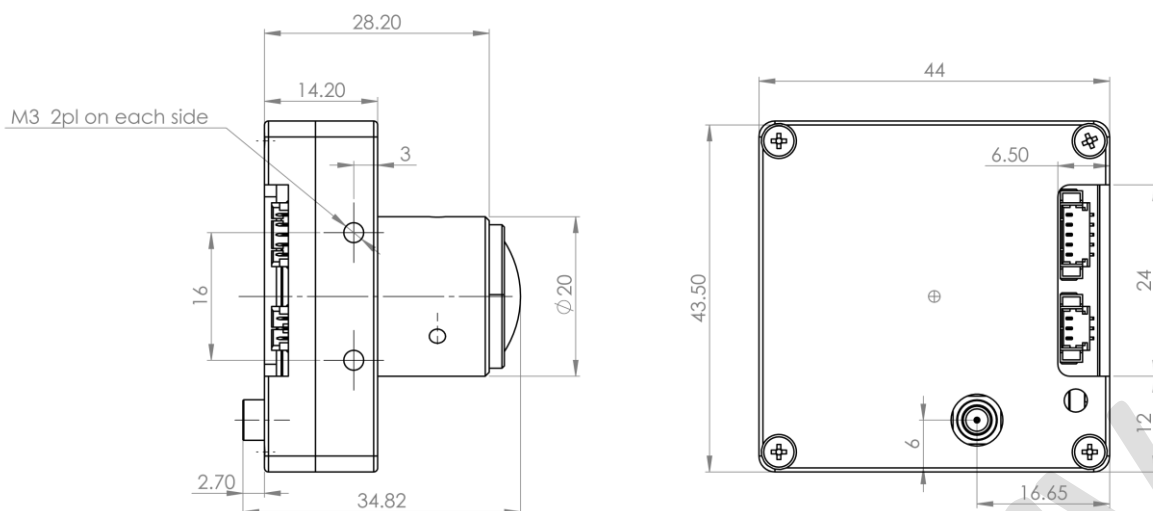


Remarks:

1. Sensor Glass Width: 0.5mm
2. Sensor Glass Refractive Index: n=1.5



Enclosed camera:



## Contact Us

Please feel free to contact our team with any question or further inquiry at [info@skyblue.de](mailto:info@skyblue.de) – we will be happy to provide assistance and consultation.

International Distributors

**sky blue**  
microsystems

Sky Blue Microsystems GmbH  
Geisenhausenerstr. 18  
81379 Munich, Germany  
+49 89 780 2970, [info@skyblue.de](mailto:info@skyblue.de)  
[www.skyblue.de](http://www.skyblue.de)

**ZERIF**  
TECHNOLOGIES LTD.  
A SKY BLUE COMPANY, FOUNDED 1999

In Great Britain:  
[Zerif Technologies Ltd.](http://ZerifTechnologiesLtd.com)  
Winnington House, 2 Woodberry Grove  
Finchley, London N12 0DR  
+44 115 855 7883, [info@zerif.co.uk](mailto:info@zerif.co.uk)  
[www.zerif.co.uk](http://www.zerif.co.uk)